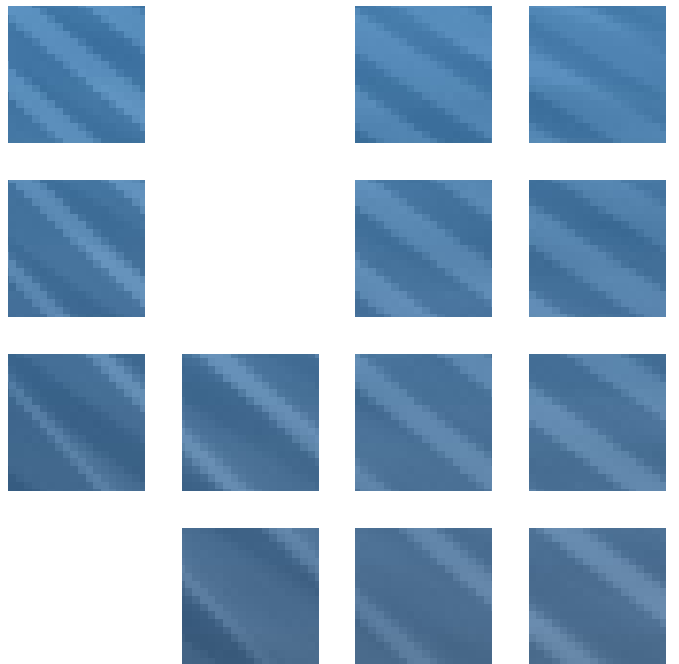
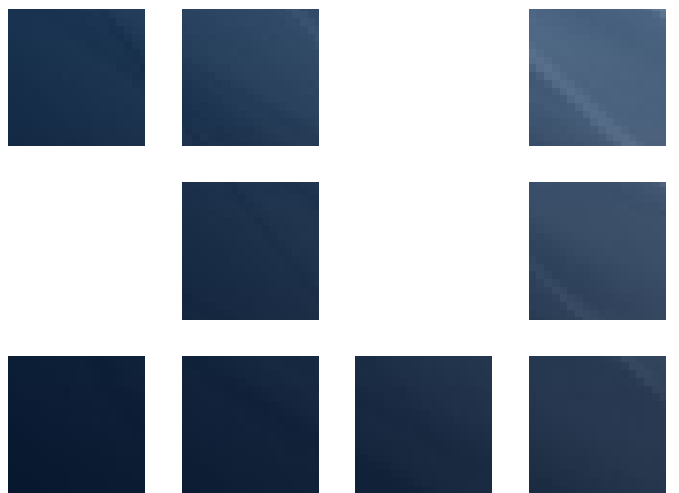


# WARRANTY CERTIFICATE

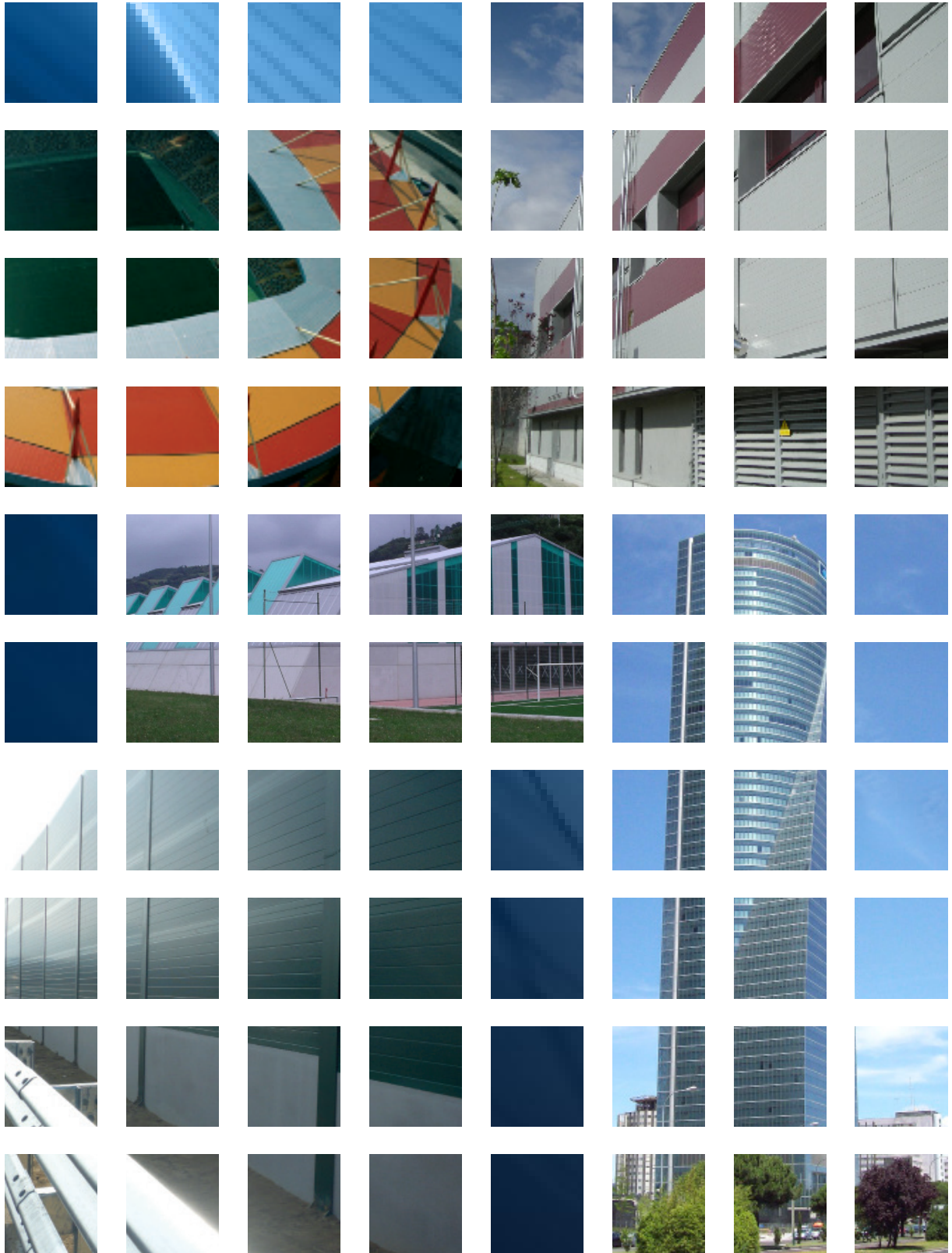
# ACH



A Saint-Gobain brand



# WARRANTY



# 10 years

Saint-Gobain Transformados, S.A.U., (hereinafter SGT), certifies that:

ACH sandwich panels, insulated with mineral wool core, and outer and inner pre-painted galvanized steel sheets, polyester coated, manufactured by SGT, in all possible configurations such as roofing panels, cladding panels and partitioning panels.

Comply with the mechanical specifications according to the data reflected in the technical specifications of the product, meeting all requirements and quality specifications required by the CE marking according to the EN 14509:2014.

Consequently, Sandwich Panels with mineral wool core (and only those kind of products) are guaranteed by the following terms and concepts:

## SCOPE AND WARRANTY PERIOD

In accordance with the conditions and limitations expressed herein, Saint-Gobain Transformados S.A.U., guarantees:

- For 10 years, against defects or hidden flaws inherent to the manufacturing and composition of the panel.

On the assumption that the products present these defects, SGT, at its option, excluding the responsibility for any other loss, or direct or indirect, material or immaterial damages, suffered by the Beneficiary or any other person, will proceed, in the order stated below and subsidiary and exclusive form:

- With the repair of defective surfaces.
- With the supplying of other panels, for replacement and relocation at the same conditions as the original order (in any case SGT will not assume the costs of disassembly and reassembly).
- To the refund of the damaged panels.

Moreover, it is expressly stated that the repair, supply or refund of the panel's price:

- Will be limited solely to the damaged areas, so that any possible differences in appearance resulting from the repair or change compared to unaffected areas will not be subject to any compensation (e.g., colour's tone difference, etc.).
- Will not entitle the customer, to extend the initial warranty period nor entail the beginning of a second period of warranty.

## SCOPE OF THE WARRANTY

- The warranty is applicable for material installed in a normal exposure area. For special applications the manufacturer must be consulted by indicating the suitability of the material: exact location of the site, agents to which the material is exposed, distance to the sea, rates of local pollution indices, etc.
- For a correct upkeep the surface should be cleaned only with water and, if necessary, using neutral cleaning agents.
- In roofs, this warranty is only applicable for panel installed in slopes greater than 5% (panels without overlapping) or in slopes greater than 7% (panels with overlapping).
- The warranty applies, if the assembly and installation requirements and recommendations established by SGT are met and followed. The use of fittings, accessories and flashings recommended by SGT is mandatory.
- The warranty applies to facilities not located under harsh environmental conditions.
- Any disagreement between the manufacturer and the customer will be resolved through the courts of Madrid (Spain).

## WARRANTY EXCLUSIONS

This Warranty does not apply to any defects resulting from:

- Damage caused during transport, storage, handling and assembly are excluded from this warranty.
- Damage rose from an external cause, such as catwalks, guardrails or other equipment, pipes or similar placed over the panels and that limit the panel's correct expansion.
- Damage caused by smoke, gases, salt or other chemical agents near the site.
- Damage caused by smoke, gases, nitrates or other chemicals near the work are excluded from this warranty.
- Damage caused by the use of unsuitable cleaning products (e.g. solvents or abrasives).
- Damage caused by the use of inappropriate products for cleaning (eg solvents or abrasives) are excluded from this warranty.
- Environmental changes in the area, quantity of salt or other airborne particles, humidity rate changes, etc.
- Damage having its source in a fire or explosion, except for faults or defects in the building's own facilities.
- Damage caused by misuse or lack of proper maintenance of the building.
- This warranty does not apply to damage caused by force majeure such as earthquakes, fire, storms, floods, hurricanes, state of war or terrorist acts.
- This warranty is not extended to cuts made during the assembly or installation and made in rear and head of the panel, that should be protected once performed, in the assembly phase by applying organic coatings on these edges (Benallun, paintings, etc).
- Personal injury or other economic damages, other than that material damage specified by the Law, such as those caused to contiguous or adjacent properties to the building and caused to personal property located within.
- Damage caused by modifications or work carried on after the conclusion of the works and reception/acceptance of the building, except for remedying defects observed in it.
- Incidents that have their origin in parts of the work on which has reserves recorded in the acceptance certificate, while such reservations have not been remedied and rectifications are reflected in a new certificate signed by the signatories of the acceptance certificate.
- Nor shall be object of this warranty, and consequently will not be covered by it, the damage caused in the panels as a result of submitting it selves or ti's surface to continuously or intermittently abnormally high and/or concentrated temperatures, such as magnifying effects, panel's heating by heat sources in order to apply bituminous materials, etc.





# ACH

A Saint-Gobain brand



ACH PANELES · SAINT-GOBAIN TRANSFORMADOS S.A.U.

C/ Los Corrales. Parcelas C5 y C6 · Polígono Industrial "La Balletera"

19208 - Alovera (Guadalajara) – SPAIN

Teléfono: +34 949 20 98 68 • +34 949 20 98 99

uk\_ireland@panelesach.com • www.panelesach.co.uk/